

PART OF S.E. 1/4 OF N.E. 1/4
SECTION 20, T.6N., R.1W., S.L.B. & M.

IN OGDEN CITY
SCALE 1" = 50'

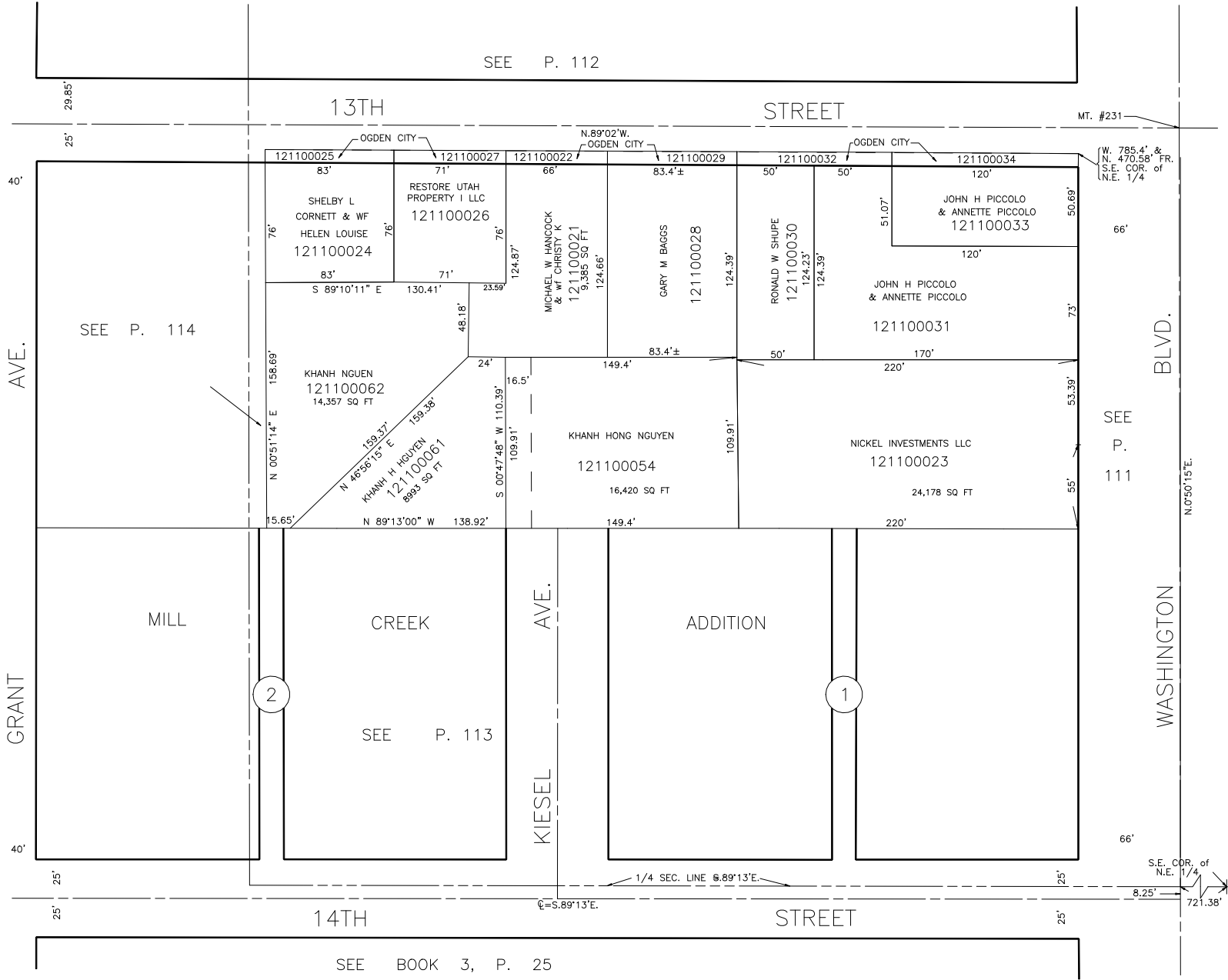
TAXING UNIT: 25

SEE P. 112

13TH

STREET

MT. #231



SEE P. 114

KHANH NGUEN
121100062
14,357 SQ FT

KHANH H NGUYEN
121100061
8993 SQ FT

KHANH HONG NGUYEN
121100054
16,420 SQ FT

NICKEL INVESTMENTS LLC
121100023
24,178 SQ FT

MILL

CREEK

KIESEL AVE.

ADDITION

WASHINGTON BLVD.

2

1

SEE P. 113

SEE P. 111

14TH

STREET

SEE BOOK 3, P. 25

S.E. COR. of
N.E. 1/4
8.25' 721.38'